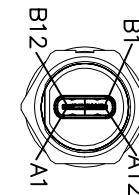
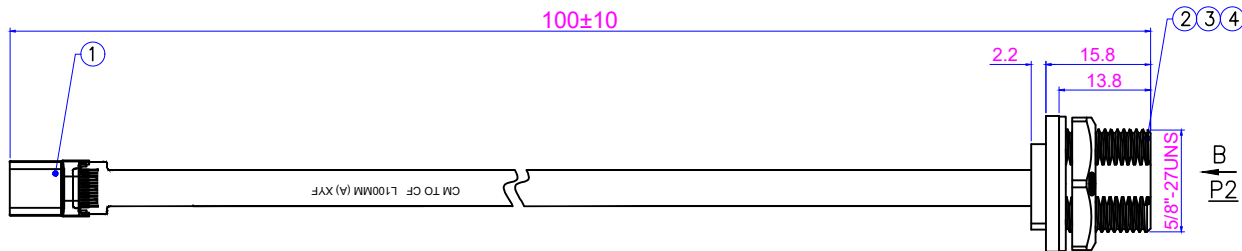
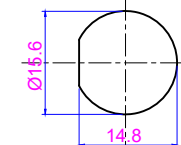


VIEW A



VIEW B

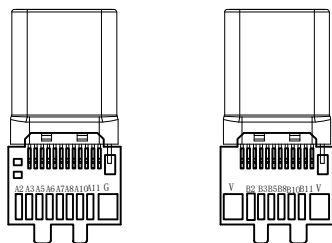


产品开孔尺寸

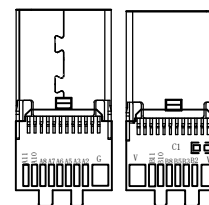


TYPE C/M

TYPE C/F



TYPE C3.1 公头焊接面



TYPE C3.1 母头焊接面

Pin Assignment 接线定义	
P1	P2
A4	A4
A9	A9
B4	B4
B9	B9
A1	A1
A12	A12
B1	B1
B12	B12
外壳	外壳
B5	B5
A5	A5
A6	A6
A7	A7
A8	A8
B8	B8
A2	A2
A3	A3
B10	B10
B11	B11
B2	B2
B3	B3
A10	A10
A11	A11

生产注意事项

深圳市正成电气有限公司
受控文件

插头技术要求

线材规格	26/30AWG
接触数量	9
温度范围	-40°C~+80°C
阻燃等级	UL94-V0
防护等级	IP67
工频耐电压	≥AC 1000V/1分钟
额定电流	1.5A
接触电阻	≤30 mΩ
绝缘电阻	≥100 MΩ DC500V

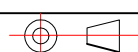
No.	Specification	Unit	Q'ty
4	E10 塑胶六角螺母5/8-27 (22.5-20-3.6单边倒角)	pc	1
3	E10 座子防水圈垫片 50° 硅橡胶 Φ20.3XΦ15.4-1	pc	1
2	E10 螺纹式板后Type C母头插座外壳	pc	1
1	定制TYPE C 3.1公头转TYPE C 3.1母头, 通过FPC软板连接, 全长L=0.1M, TYPE C 公头使TYPE-C -CM 黑色胶芯 拉伸式铁壳 镀镍, TYPE C母头: TYPE-C -CF 黑色胶芯 铆合铁壳 镀镍, FPC软板: 黄色软性线路板 叠构: 4层线路, 接线定义: A4/A9/B4/B9-A4/A9/B4/B9, 外壳/A1/A12/B1/B12-A1/A12/B1/B12/外壳, B5-B5, A5-A5, A6-A6, A7-A7, A8-A8, B8-B8, A2-A2, A3-A3, B10-B10, B11-B11, B2-B2, B3-B3, A10-A10, A11-A11 (1P07-FPC-CM31-FPC-CF31-0.1M)	pc	1

GENERAL TOLERANCE (UNLESS SPECIFIED)		Specification		
≤10 ±0.1	DWN			
<10~≤20 ±0.2	CHK			
<20~≤50 ±0.5	APVD	TITLE E10 FPC-TF-F/FPC-A-M-0.1M		
Angle ±1°	UNIT MM	REV A	PART NO	
THIRD ANGLE	SIZE A4	SHEET 1 OF 1	DRAWING NO 2CA2-E10 FPC-TF-F/FPC-A-M-0.1M	

声明: 请贵司在2个工作日内确认并回传图纸, 过期未回传的, 默认为贵司已确认合格

业务确认

客户	图号	日期	制图	审核
		2022-08-03	周子翔	
料号	单位: mm		Size:A4	
品名				



RoHS